

# Early Years Free Entitlement (EYFE)

## Funding Packages

We offer a range of funding packages. The packages are based on the number of funded hours the child receives and the number of days or half days the child attends each week. The hourly rate paid for additional hours decreases as attendance increases.

## Voluntary Enrichment Fee

Our nursery operates a completely voluntary approach to enrichment fees.

The government funding is designed to cover basic nursery and preschool education. However, it does not fully meet the costs of the comprehensive services we offer. Parents can choose to participate in our voluntary enrichment fee, provide their own items, or decide that their children can skip certain activities as they see fit. We encourage families to take advantage of the enrichment opportunities we provide to enhance their children's learning experience.

<b>Option A</b> <b>Opt in for all-inclusive fees</b>	<b>Option B</b> <b>Opt out of voluntary fees</b>
<ul style="list-style-type: none"> <li>• Pay the weekly Enrichment fee</li> <li>• Pay the weekly meal fee</li> <li>• Fees include all meals and peripatetic classes</li> <li>• Total £10 per week - 15 hrs entitlement</li> <li>• Total £20 per week - 30 hrs entitlement</li> </ul>	<ul style="list-style-type: none"> <li>• Supply your own meals</li> <li>• Opt out of peripatetic classes</li> </ul>

The weekly enrichment fee can cover items such as nappies, wipes, suncream, activities etc. We include nappies, wipes and dairy milk within our funded hours.



Our all-inclusive fee, Option A, covers the cost of our peripatetic class provision. The fee is not intended to cover a specific number of classes each week but rather to cover the overall costs across the year, is included in option A and is broken down as follows.

15-Hour Free Entitlement	30-Hour Free Entitlement
£4 (included in the £10pw)	£7 (included in the £20pw)

If you choose not to pay the enrichment fee, you will pay for the following items if you wish to take part in or use the following services on an ad hoc basis.

Under 3s	3 and 4 year olds	
We ask parents to consider paying the enrichment fee. If it is not affordable for you, we absorb the cost of these services for children under three years old	Peripatetic Classes	£7 per class
	Trips and Outings	Communicated on an individual basis

You may choose not to pay the enrichment fee on a termly basis.

## Meals

Your breakfast and snacks are included in your funded hours. Lunches and Teas during your funded hours are included in Option A and broken down as follows

15-Hour Free Entitlement	30-Hour Free Entitlement
£6 (included in the £10pw)	£13 (included in the £10pw)

If you would prefer to supply these, lunches and teas will need to follow our strict guidance, available separately.

You can opt in and out of meal fees on a termly basis. No credit is given during periods of sickness absence. Parents may request a refund for period of holiday, where 3 weeks notice has been given and the request for a refund must be made at the point of notification. Refunds are given for full week absences, no pro rata refund is given when part of a week is taken as holiday.



## Choose how you use your funded Hours...

Option one and option two are for all year around attendance only.

### Option 1

#### Choose your own hours

**You can choose your session start and finish times for sessions between 8 and 9 hours long. May suit parents who work shorter shifts, and need more flexibility with timing.**

Funded Hours: Free

Additional hours: £10 per hour

Voluntary enrichment fees apply

Meal fees apply – per week for funded hours, and per meal during additional hours

No requirement to add privately paid for hours to your funded session.

No maximum number of funded hours



### Option 2

#### Choose one of our packages

**You can choose one of our funded options, with sessions starting at 8am or 1pm, and finishing at 1pm or 6pm.**

**May suit parents who require longer morning, afternoon or all day sessions.**

Funded Hours: Free

Voluntary enrichment fees apply

Meal fees apply per week for funded hours, and per meal during additional hours

No maximum number of funded hours

### Option 3

#### Term Time Only

**See our separate fee sheet for session options**

Funded Hours: Free

Additional hours: £12 per hour

Voluntary enrichment fees apply

Meal fees apply

No maximum number of funded hours

## Deposit

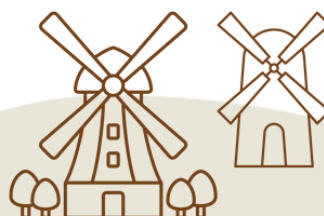
A deposit of £200 is required to hold a nursery place. The deposit is refundable on your first invoice if you only access your early years free entitlement and do not use any additional hours. The deposit is retained and refunded on your final invoice if you use additional hours. In the event that you reserve a place and do not start, the deposit is non-refundable.

## Registration Fee

There is a £35 registration fee charged at the point of registration. The registration fee is waived for stand-alone and funded hours only schedules.

## Restrictions for funded hours

We may only be able to offer funded sessions on specific days due to availability, please check when enquiring.



## Option 2:

### All Year Around Packages: Fees with 30 Hours of free entitlement.

Your free entitlement of 1140 hours per year is spread across 51 weeks, giving you 22 hours each week.

One day is equal to 8 am to 6 pm. Each half-day is 5 hours, either 8 am to 1 pm or 1 pm to 6 pm, unless otherwise stated. EYFE hours are spread equally across your package. Your funding package starts at the beginning of your week, and additional hours are added once it is used up. ***Additional non-funded hours and days can be added to these packages. Full days must be 8 or more hours long, half days must be a minimum of 4 hours, and be between either 8 am and 1 pm or 1 pm and 6 pm.***

	EYFE Hrs p.w	Private Hrs p.w.	Fee p.w for private hrs	Fee p.w inc. meals & enrichment^
2 Days/4 half days (under twos)*	20	0	0	£20
2.5 Days/5 half days (under twos)*	22	3	£33.75	£53.75
2 Days/4 half days	15	5	£65	£85
2.5 Days/ 5 half days	20	5	£65	£85
3 Days	22	8	£90.00	£110

Fees for additional hours	£10ph	Lunch £3.50 Tea £2.50
Discounts for 8-6/8-1/1-6	4.5 days: 5%	5 days: £15%

\*This package is available until 31st August after your baby turns two years old.

^voluntary



## Option 2:

### All Year Around Packages: Fees with 15 hours of free entitlement.

Your free entitlement of 570 hours per year is spread across 51 weeks, giving you 11 hours each week.

One day is equal to 8 am to 6 pm. Each half-day is 5 hours, either 8 am to 1 pm or 1 pm to 6 pm, unless otherwise stated. EYFE hours are spread equally across your package. Your funding package starts at the beginning of your week, and additional hours are added once it is used up.

	EYFE Hrs p.w.	Private Hrs p.w	Fee p.w. for private hrs	Fee p.w inc. meals & enrichment^
1.5 Days/3 half days (Under twos only)*	11	4	£50.20	£60.20
2 Days/4 half days	11	9	£94.50	£104.50
5 Days 815 until 445	11	31.5	£315	£325

Fees for additional hours	£10ph	Lunch £3.50 Tea £2.50
Discounts for 8-6/8-1/1-6	4.5 days: 5%	5 days: £15%

\*This package is available until 31st August after your baby turns two years old.





## Settling in Sessions

We offer a schedule of settling in sessions for children joining the nursery. Settling in sessions for fully funded and stand alone places will take place during your first two weeks of funded sessions. If you are purchasing additional private sessions, the settling in sessions take place before your start date.

## Invoices

Invoices for the following calendar month are raised on or around the 15th of the month and are due for payment on or before the 27th of the same month. We operate a variable invoice structure, where you will pay for the contracted sessions falling within that month rather than a fixed monthly fee. This means that your invoice will be lower when there are fewer working days in a month and will be higher when there are more. You are not invoiced for bank holidays or periods of planned closure over Christmas.

## Sibling Discount

A Sibling discount of 8% can be added to the eldest child.

## Ad Hoc Sessions

Parents can request additional ad hoc sessions to their funded schedule at the following rates

Half Days between 8am and 1pm or 1pm and 6pm Full Days – minimum of 7.5 hours	£10ph plus lunch and tea fees if applicable
--	---

## Additional Charges

If parents choose not to pay the meal fee, or forget to supply the meals or booking ad hoc sessions, you will be charged the following per meal, unless otherwise stated:

Lunch	£4
Tea	£4

